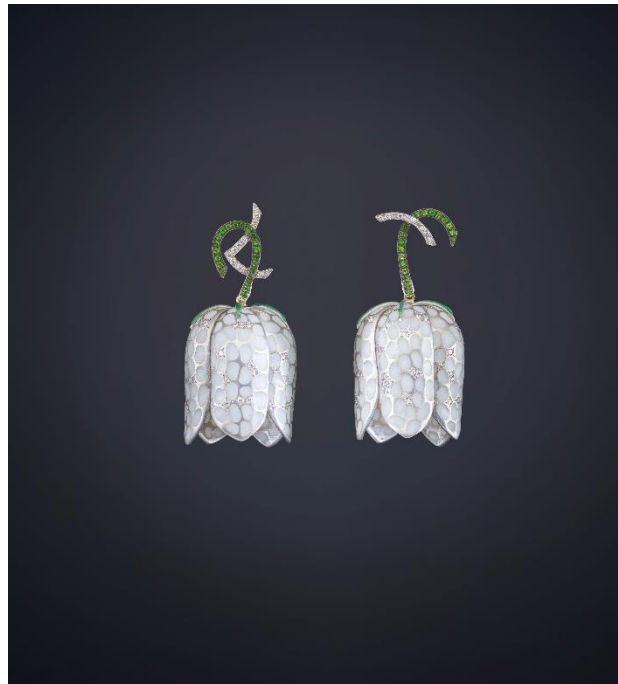


VKD JEWELS PRESENTS LUZ CAMINO AT BRAFA 2025



Luz Camino is a renowned Spanish jewellery designer known internationally for her unique, artistic creations. Her work is special for its combination of sophisticated technique, innovative materials and a strong emphasis on natural elements. Here is a comprehensive overview of her career and style:

Background

Luz Camino began her career in the jewellery world with a deep fascination for art and design. Self-taught, she learned the intricacies of the craft through experimentation and a huge passion for the craft. Her Spanish heritage plays a major role in her work, which often features Mediterranean influences.

Design style

Her style is characterised by a deep appreciation for nature. She draws inspiration from flowers, leaves, insects and other natural forms, which she transforms into sophisticated, delicate jewellery. Camino's work balances on the border between art and craft, where each piece can be considered both a wearable piece of jewellery and a work of art in its own right.

Materials and Techniques

What further distinguishes Luz Camino's work is her use of a wide range of materials. Besides traditional gemstones and metals, she experiments with unconventional materials such as glass, porcelain and even recyclable fabrics. She combines these materials in a way that mimics the textures and colours of nature.

Her jewellery is often handmade and displays outstanding craftsmanship. She uses both old and new techniques, such as enamelling and forging, and often adds subtle details that make her pieces unique.

Fame and Influence

Luz Camino has built an impressive reputation over the years. Her work has been exhibited in some of the most prestigious galleries and museums worldwide, including the Victoria & Albert Museum in London, The Musée des Arts Décoratifs in Paris and The Museum of Arts and Design in Boston. She has also collaborated with other artists and designers, and her pieces are worn by art lovers and celebrities around the world.

Despite her international success, Camino remains humble and focused on creating jewellery that is not only aesthetically beautiful, but also tells a story and evokes an emotional connection.

Unique Creations

Some of her most iconic works include the 'Frozen Leaves' collection, inspired by frozen leaves in winter, and the 'Vuela' series, in which she brings wings of butterflies and dragonflies to life in jewellery. These collections highlight her ability to capture the beauty of fleeting moments in lasting works of art.

Philosophy

For Luz Camino, jewellery design is not only about aesthetics, but also about expressing ideas and emotions. She sees each piece as a way to tell a story or convey a message, often related to nature, temporality, and the beauty of imperfection.

VKD JEWELS

Aimée & Fleur van Kranendonk Duffels – STAND 113

By appointment

Amsterdam

m. +39 335 626 22 52 | m. +31 (0)6 17 33 49 62

info@vkdjewels.com | www.vkdjewels.com

